



news release

FOR IMMEDIATE RELEASE

contact: Shelly Megaw, 507.381.0404
smegaw@greatermankato.com

September Sees Monthly and Yearly Job Gains

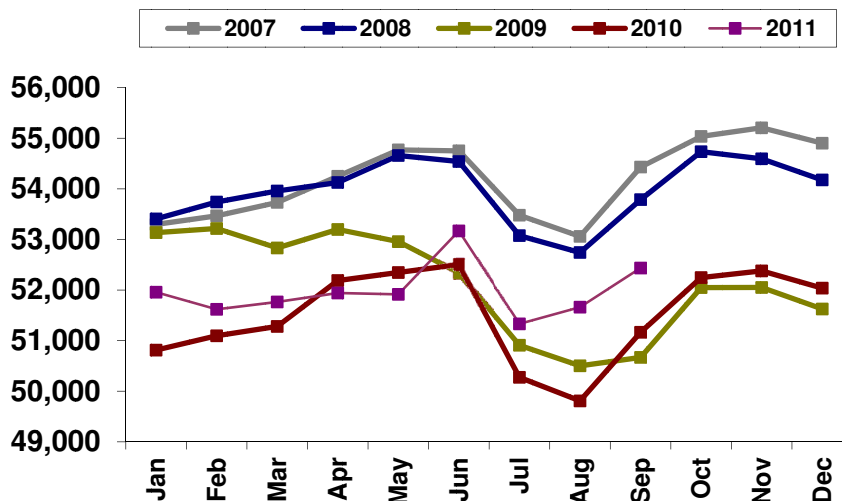
Mankato, MINN (October 20, 2011) – The Minnesota Department of Employment and Economic Development (DEED) today released job figures for our regional Metropolitan Statistical Area (MSA) that includes Blue Earth and Nicollet counties.

When it comes to judging the economic strength of a region relative to jobs, one of the best sources is Current Employment Statistics (CES) data, which measures the number of paid employees in a particular region, excluding self-employment and farm jobs.

Today’s CES report indicates the MSA had a year over year job increase of 1,270 jobs or 2.5%. The government sector actually lost 12 jobs, while the private sector added 1,282 jobs. Of these private sector jobs, 84% were service producing and 16% were goods producing.

Month over month numbers reveal 534 more jobs in September than August, with the government sector adding 813 jobs and the private sector losing 279 jobs.

“The good news is that year over year job numbers continue to grow over previous years, while month over month numbers continue to follow a normal trend line,” said Greater Mankato Growth President & CEO Jonathan Zierdt.



Source: CES, Minnesota Department of Employment & Economic Development (DEED)
Compiled by: Greater Mankato Growth, Inc. | greatermankato.com | 507.385.6640 | info@greatermankato.com

Another measure of area employment is the **Local Area Unemployment Statistics (LAUS)**. LAUS is not as much an indicator of the strength of the business climate, because it measures the total number of people who live in a particular region who are employed, rather than the businesses in the region employing them. Still, LAUS employment numbers continue to look good, with an August unemployment rate of 5.8% for the region. Also, when compared to other areas of the state and country, Greater Mankato fares well in terms of unemployment (<http://www.positivelyminnesota.com/apps/lmi/laus/Graph.aspx?geog=2721031860&adjust=0>).

About Greater Mankato Growth

Greater Mankato Growth (GMG) is committed to advancing business for a stronger community. As the Chamber of Commerce and Economic Development organization serving the regional marketplace, GMG advances business through: existing business support, new business growth, business promotion, talent development, public affairs, community marketing, visitor attraction and servicing and civic engagement.

###