



U.S. Immigration
and Customs
Enforcement

SEVP

STUDENT AND EXCHANGE VISITOR PROGRAM

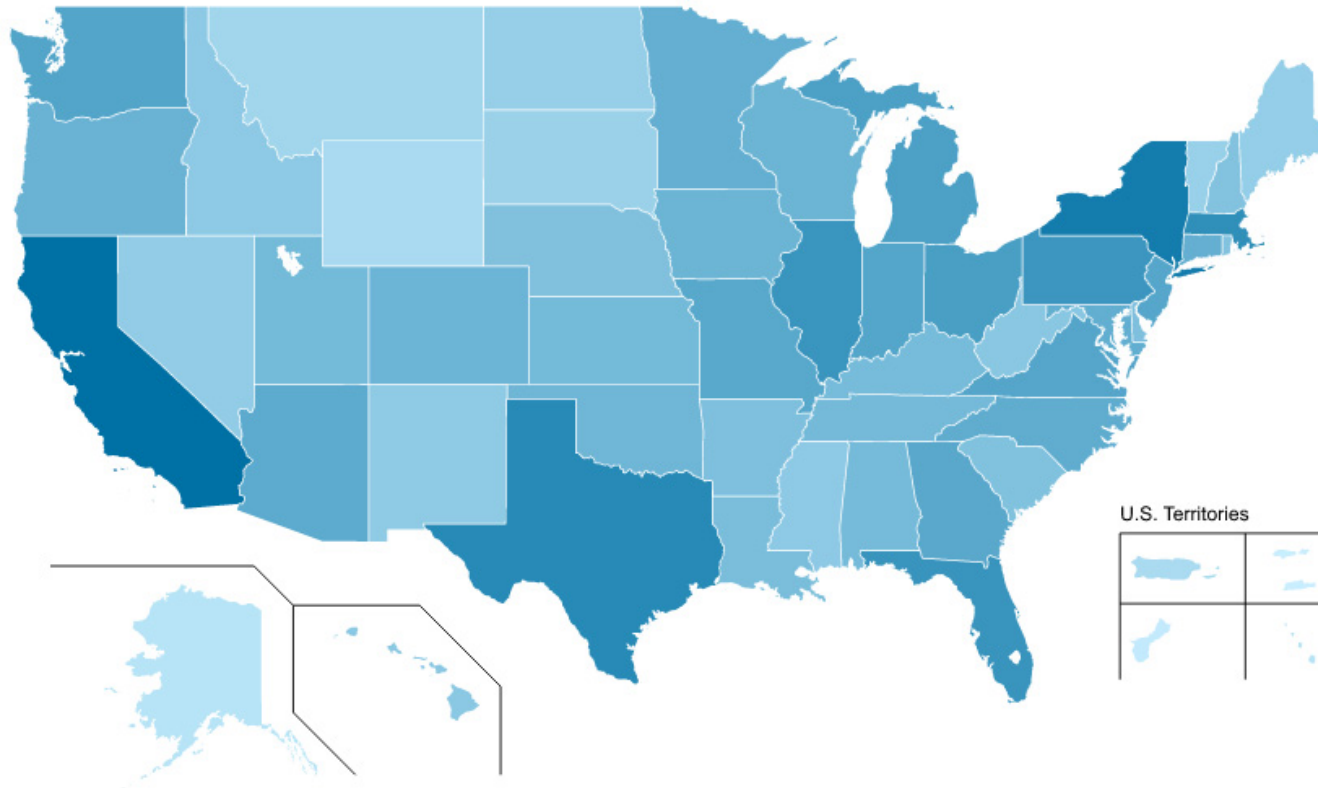
Employment and Training: F-1 and M-1 Students

Greater Mankato Growth – Regional Chamber of Commerce
and Economic Development Organization

May 3, 2017

SEVIS by the Numbers

International Students in Minnesota



16,834 ACTIVE INTERNATIONAL STUDENTS IN MINNESOTA

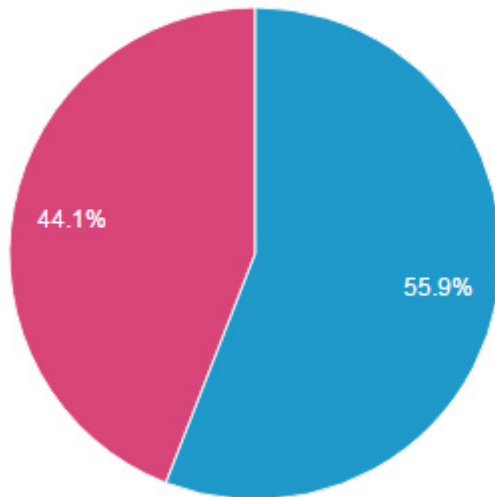
Data from March 2017

SEVIS by the Numbers

International Students in Minnesota

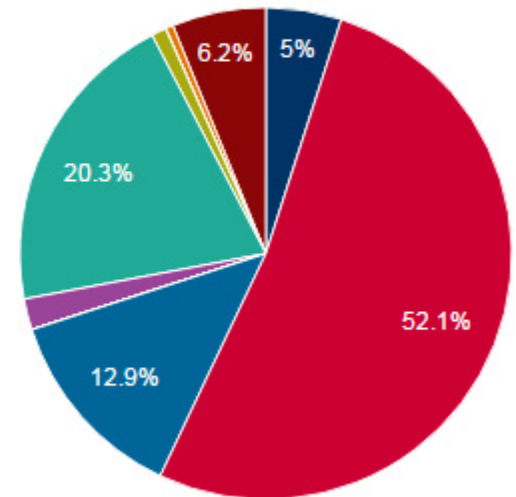
Male/Female Breakdown

- Male
- Female



Education Level Breakdown

- Associate
- Bachelor's
- Doctorate
- Flight School
- High School
- Language Training
- Master's
- Other
- Other Vocational School
- Primary
- Secondary



Data from March 2017

SEVIS by the Numbers

Certified Schools in Minnesota



201

CERTIFIED SCHOOLS

Data from April 2017

International Students

Economic Impact on Minnesota

- \$32.8 billion generated for the United States in 2015-16 academic year
- In Minnesota, international students generated:
 - \$418.5 million
 - 4,184 jobs
 - 1,819 direct jobs
 - 2,329 indirect jobs

Data from NAFSA International Student Economic Value Tool for 2015-16 academic year

Presentation Overview

1

F-1 STUDENTS

2

M-1 STUDENTS

3

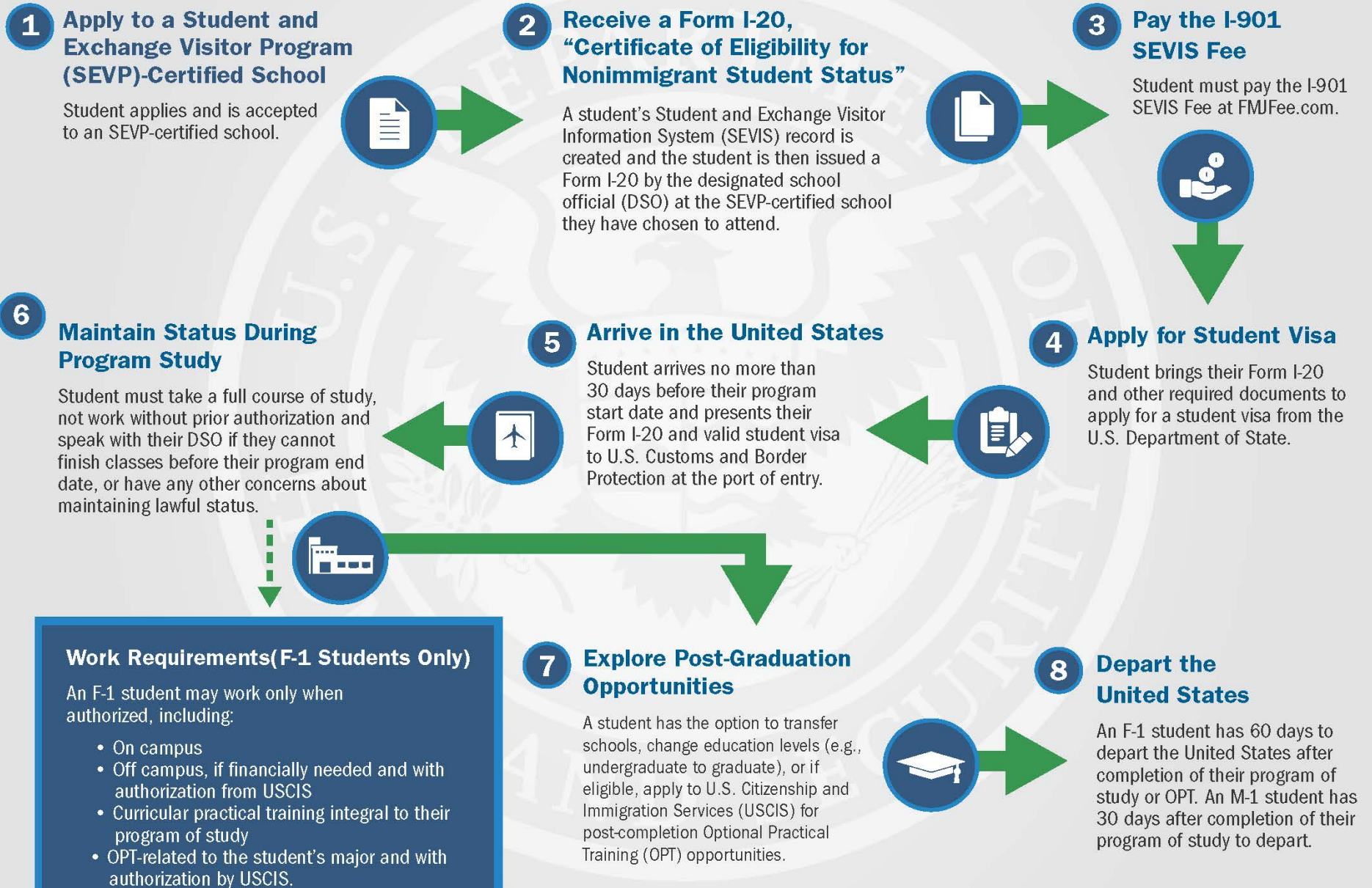
APPLYING FOR BENEFITS

4

HELPFUL RESOURCES

F-1 STUDENTS

International Student Life Cycle (F-1/M-1)



On-campus Employment

- Available to students with Active Student and Exchange Visitor Information System (SEVIS) records
- Takes place at school or affiliated off-campus location
 - Work must directly provide services to other students
- Cannot exceed 20 hours per week while school is in session
- Tips for students
 - Student must apply for Social Security number
- Best practices for Designated School Officials (DSOs)
 - Keep employment record in student's file

Off-campus Employment

- Students eligible after completing one full academic year
- Typically only allowed due to:
 - Circumstances that create severe economic hardship
 - Emergent circumstances
- Process to apply for off-campus employment
 - Student cannot begin work while Form I-765 is pending with U.S. Citizenship and Immigration Services (USCIS)
- Considerations for DSOs
 - Student cannot work more than 20 hours per week when school is in session
 - Student must apply for Social Security number

Curricular Practical Training

- Intended to provide work experience and add skills that complement academic studies
 - Must be integral to program of study
 - Must directly relate to student's major
 - Not restricted to 20 hours per week
- Requirements to qualify for CPT
- Types of CPT
- Required documents
- Restrictions on other training

Optional Practical Training

- Form of training that must relate to major or course of study
- Restrictions
 - Can apply for up to 12 months of OPT for each level of study completed
 - Must be on track to complete one full academic year
 - Cannot begin work until authorized by USCIS
- Student application process
- Pre-completion vs. post-completion OPT

STEM OPT Extension

- Student and employer eligibility
- Applying for a science, technology, engineering and mathematics (STEM) 24 month OPT extension
- DSO recommendation considerations
 - Student status
 - Degree type
 - Prior degrees
 - Employer
- Form I-983
 - Instructions
 - Material changes
 - Evaluation of student progress

STEM OPT Extension

- **Maintaining status while participating in STEM OPT**
 - Validate SEVIS information
 - Annual self-evaluations
 - Material changes to existing Form I-983
 - Unemployment
 - Employer noncompliance
- **Reporting requirements for DSOs**
 - Determine completeness of Form I-983
 - Keep Form I-983 with student's record
 - Validate student's SEVIS information
 - Track loss of employment, change of employer or employer noncompliance

Entrepreneurship

- F-1 students who plan to start and own their own business must qualify and apply for OPT
- Can be either pre- or post-completion OPT
 - Work must relate to program of study
- STEM OPT stipulation
- Resources for entrepreneurship

Working After Program Completion

- Students have up to 60 days to:
 - Apply for post-completion OPT
 - Change visa status
- Cap gap overview
 - Makes some F-1 students eligible for F-1 status extension and authorized period of post-completion OPT
 - Period of time between the end of F-1 status and beginning of H-1B temporary worker status

M-1 STUDENTS

Practical Training

- Must directly relate to student's program of study
- Eligibility
 - Only participate in practical training after program completion
 - Earn one month of practical training eligibility for every four months of program enrollment
 - Must obtain authorization from USCIS
- Student responsibilities
- After program completion

APPLYING FOR BENEFITS

Social Security Number

- **Application process**
 - Authorized to work in the United States
- **Steps students take to obtain a Social Security number**
 - Talk to DSO
 - Ensure status is Active in SEVIS
 - Wait 10 days after arriving in the United States before applying
 - Visit local Social Security Administration (SSA) office

HELPFUL RESOURCES

Additional Information

- **Study in the States - studyinthestates.dhs.gov**
 - Working in the United States page
 - Training Opportunities in the United States page
 - STEM OPT Hub
- **ICE.gov/SEVP**
 - DHS STEM Designated Program List
- **USCIS's webpage – uscis.gov**
 - Cap gap extension page
 - E-Verify
 - Emergent circumstances listed on “Alerts” page
 - Entrepreneur Visa Guide