

TOUR OF

2019

MANUFACTURING

FEATURING **23**
MANUFACTURING
FACILITIES

1 HIGHER EDUCATION
LOCATION

Thursday, October 3rd
9am - 3pm

Saturday, October 5th
9am - 1pm

FREE
AND OPEN TO
THE PUBLIC

Photo courtesy of South Central College



EIDE LIKE

I'D LIKE TO BUILD A STRONG FUTURE

Eide Bailly is proud to support our local manufacturers in the South Central Tour of Manufacturing. As a top 25 CPA firm in the nation, we've been helping manufacturers reach their goals through services that go well beyond traditional tax and audit. Whether you're updating your technology, filing for R&D tax credits or planning for succession, we can help you make confident business decisions and keep our local economy growing strong.



CPAs & BUSINESS ADVISORS

What inspires you, inspires us.
507.387.6031 | eidebailly.com



Welcome to the Tour of Manufacturing

Are you curious about modern manufacturing? Have you ever driven by a manufacturing facility and wondered what they do, what they make, or how they make it? Do you dream about automation, robotics, and mechatronics? Whether you are new in your desire to learn more about manufacturing or if you are a skilled professional, we invite you to experience South Central Minnesota on the Tour of Manufacturing, **Thursday, October 3rd from 9am to 3pm** and, **Saturday October 5th from 9am to 1pm**. This event is similar to a “Parade of Homes” and is FREE to students, job seekers, and the general public. Manufacturers across the region will be opening their doors to showcase their facilities, products, machines, and the variety of opportunities in their in-demand and high paying profession.

This tour is a great opportunity for both high school students exploring careers as well as current job seekers seeking to advance in their skillset or make a career change. Manufacturing employers are hiring and excited to show the variety of careers they offer: finance, production, marketing, IT, and more. Manufacturing isn’t just assembly—it’s innovative and high-tech, in-demand and secure, clean and safe, and offers a wage much higher than the regional average.

We would like to thank our participating manufacturers for opening their doors and sharing their story, Eide Bailly for their generous sponsorship and continued investment in this tour, and all of you for participating in this great event year after year.

— South Central Tour of Manufacturing Partnership

The manufacturing industry is a significant contributor to the South Central Minnesota regional economy. According to DEED’s Quarterly Census of Employment and Wages (QCEW) data, the 9-county South Central Region (region 9) was home to 347 manufacturing establishments providing 18,830 jobs on average in 2018. That was 5.9 percent of total manufacturing employment in the state. Manufacturing accounted for 17.8 percent of the total employment, making it the largest industry sector in the region, ahead of health care and social assistance (18,573 jobs). South Central has the fourth largest concentration of manufacturing employment of the 13 regions in the state.

These manufacturers provided about \$997 million in total payroll in 2018, making it the largest industry in terms of payroll. Average weekly wages in manufacturing were \$1,018 in 2018, which was 23.5 percent higher than the average across all industries. (See table 1 on page 4)

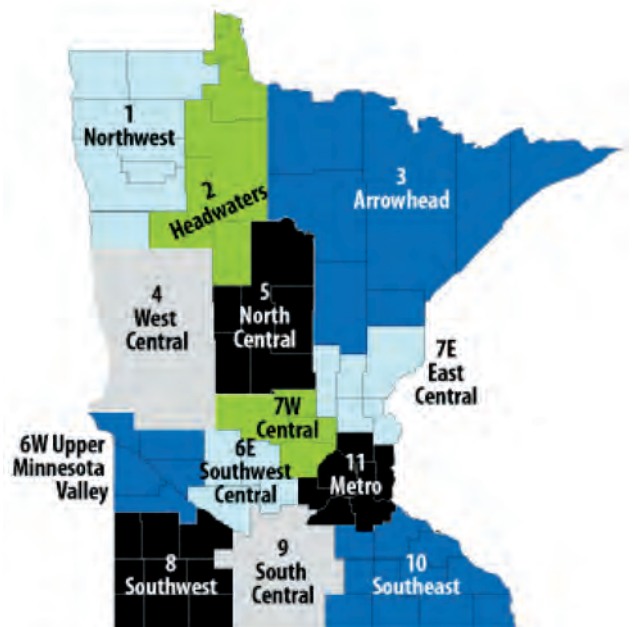


Table 1. South Central Minnesota Manufacturing Industry Employment Statistics (2018 Annual Averages)					
NAICS Code	Industry Title	Number of Jobs	Number of Firms	Total Payroll	Average Weekly Wage
0	Total, All Industries	105,959	6,749	\$4,543,732,764	\$824
1013	Manufacturing	18,830	347	\$996,889,862	\$1,018
311	Food Manufacturing	5,757	57	\$310,878,480	\$1,040
323	Printing & Related Support Activities	2,612	37	\$108,987,490	\$804
335	Electrical Equipment, Appliance, & Component Manufacturing	1,890	18	\$110,286,431	\$1,122
327	Nonmetallic Mineral Product Manufacturing	1,402	17	\$85,398,006	\$1,171
334	Computer & Electronic Product Manufacturing	1,283	17	\$73,098,572	\$1,095
332	Fabricated Metal Product Manufacturing	1,208	56	\$61,364,870	\$976
333	Machinery Manufacturing	962	36	\$47,318,812	\$946
326	Plastics & Rubber Products Manufacturing	842	17	\$40,633,570	\$928
336	Transportation Equipment Manufacturing	721	14	\$39,755,568	\$1,060
325	Chemical Manufacturing	535	13	\$35,081,004	\$1,260
339	Miscellaneous Manufacturing	468	24	\$25,227,500	\$1,035
312	Beverage & Tobacco Product Manufacturing	314	8	\$12,634,825	\$774
Source: DEED Quarterly Census of Employment and Wages					

OCCUPATIONAL EMPLOYMENT STATISTICS

DEED's Occupational Employment Statistics program provides detailed employment and wage data for a wide range of occupations involved in manufacturing. In sum, there were an estimated 9,190 people working in production occupations in the South Central Minnesota, accounting for about 8.9 percent of the total regional employment. In addition to production occupations, manufacturers also require the services of workers in several other occupational groups, such as office and administrative support, transportation and material moving, architecture and engineering, management, and installation, maintenance and repair, sales, business and financial operations, and computer and mathematical. Not surprisingly, wages were higher for the higher level positions such as management, computer and mathematical, architecture and engineering, and business and financial operations, all of which pay over \$30.00 an hour. (See table 5)

Table 5. South Central Occupational Employment and Wage Statistics - 1st Qtr. 2019				
Occupation	South Central		Minnesota	
	Employment	Median Hourly Wage	Employment	Median Hourly Wage
Total, All Occupations	103,510	\$18.24	2,867,700	\$20.95
Production	9,190	\$18.25	214,230	\$18.68
Office & Administrative Support	14,630	\$17.55	405,970	\$19.10
Transportation & Material Moving	7,900	\$18.31	177,580	\$18.48
Architecture & Engineering	1,480	\$31.61	56,070	\$37.53
Management	4,670	\$40.79	171,250	\$51.26
Installation, Maintenance & Repair	4,370	\$21.88	100,030	\$23.13
Sales & Related	10,020	\$12.69	277,070	\$14.97
Business & Financial Operations	3,180	\$28.69	164,510	\$33.03
Computer & Mathematical	1,480	\$29.78	96,020	\$40.96
Source: DEED Occupational Employment Statistics				

Team and all other assemblers, packaging and filling machine operators, printing press operators, machinists, and production supervisors are among the top five highest employing manufacturing occupations in the region. Combined, these five occupations make up 38.1 percent of all production employment in South Central Minnesota. Median hourly wages for these manufacturing positions ranged from a low of \$11.57 for laundry and dry cleaning workers to a high of \$30.34 for numerical tool and process control programmers. Almost all of these manufacturing occupations can be gained with a high school diploma (or equivalent), however there are three occupations that require some vocational training, including machinists, tool and die makers, and numerical tool and process control programmers.

South Central Tour of Manufacturing Partnership:

City of Fairmont
City of Le Sueur
Faribault County CEDA
Eide Bailly
Greater Mankato Growth
Mankato Area Public Schools (MAPS)
Mankato Free Press
MN Department of Employment and Economic Development
Minnesota State Engineering Center of Excellence
New Ulm Chamber of Commerce
South Central College
South Central Service Cooperative
South Central Workforce Council
Waseca Area Chamber of Commerce



2120 N. Broadway St. New Ulm, MN 56073

Learn What We Do



Thursday Oct. 3rd • 9am to 3pm

MECHANICAL AND HYDRAULIC ASSEMBLY



WELDING

PAINTING & SURFACE TREATMENT



**YOUR FUTURE
IS MADE IN
MANUFACTURING**
dreamitdoitm.com

When touring look for this sign.

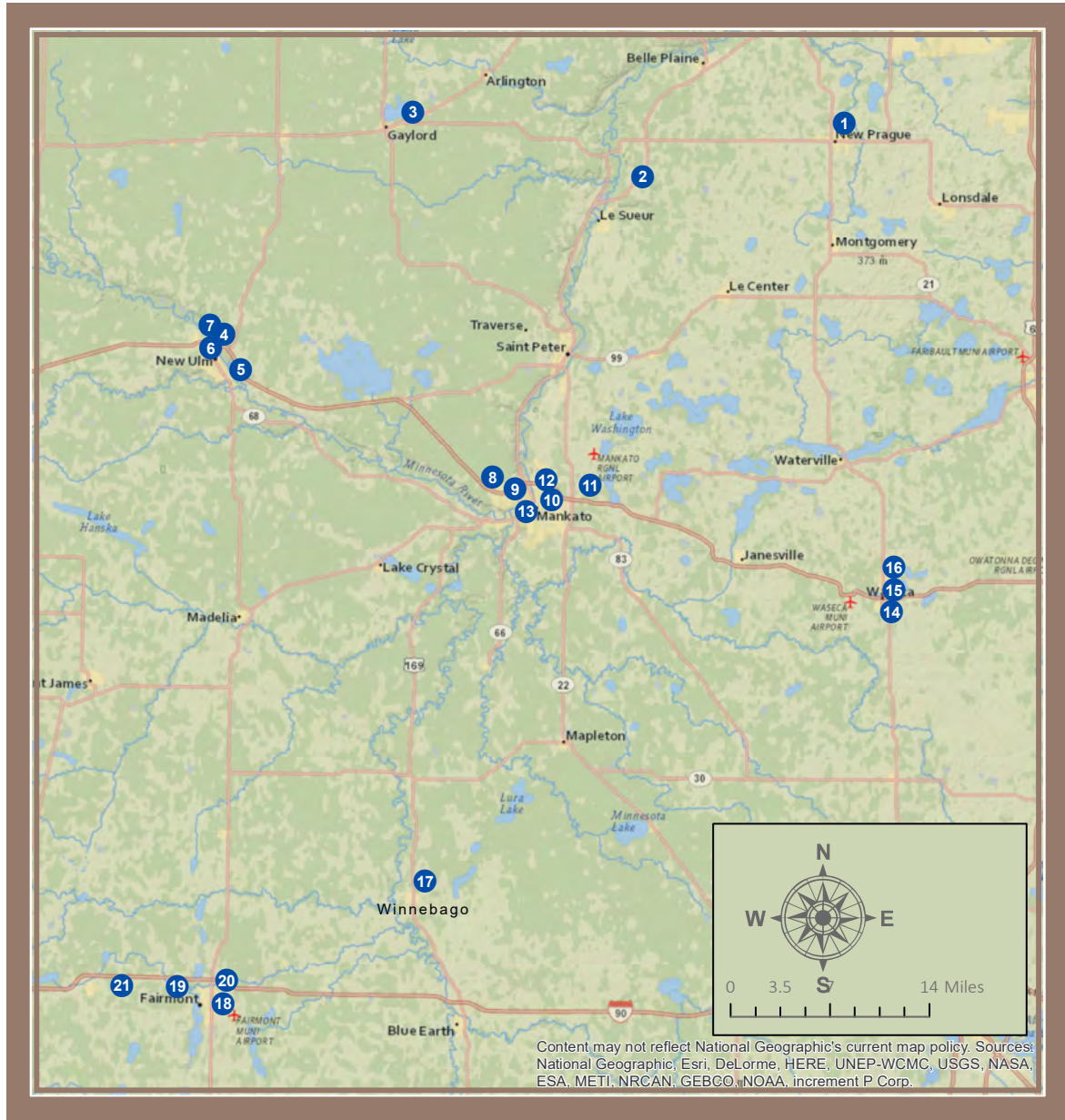


Sponsored by:



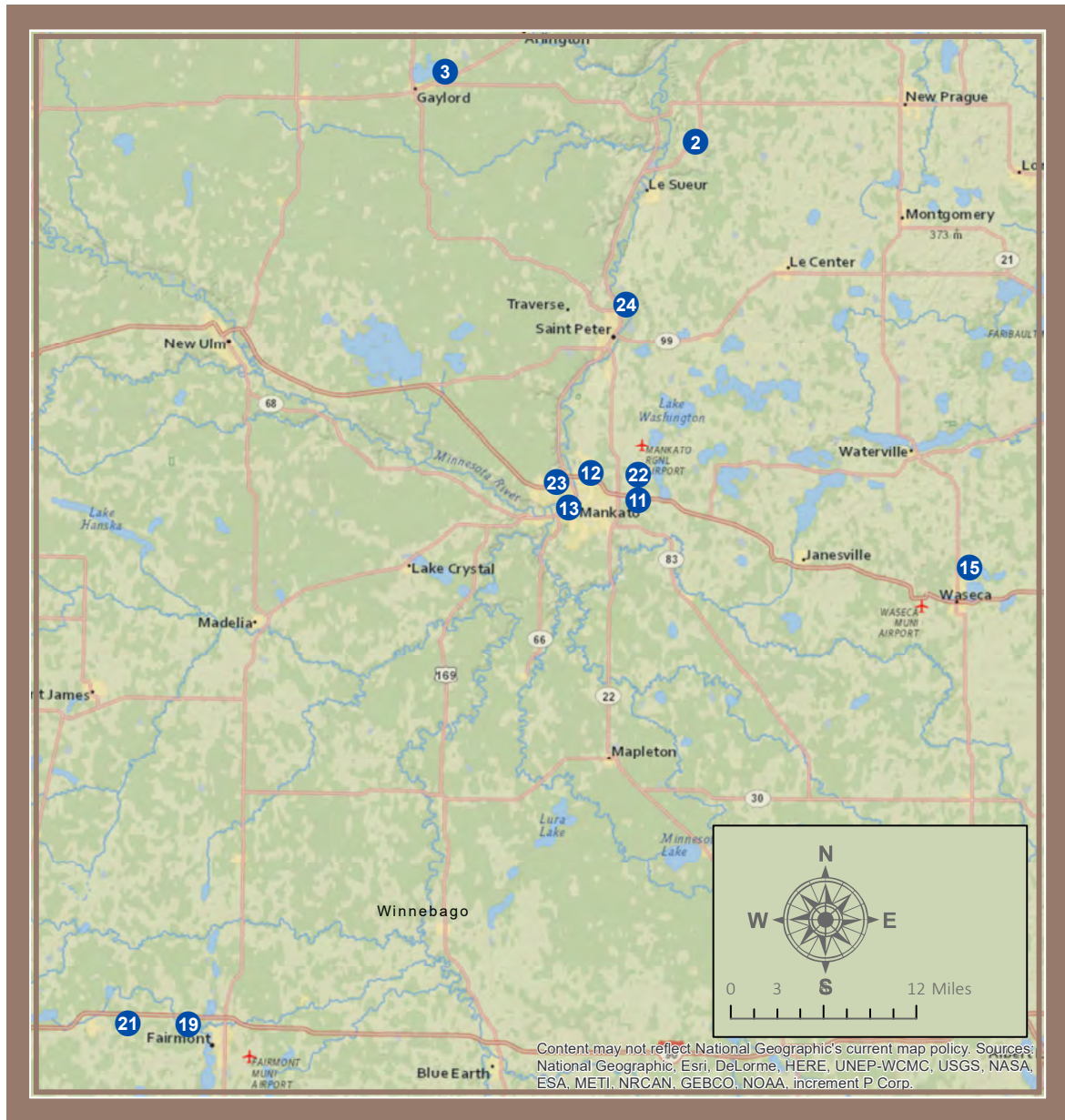
CPAs & BUSINESS ADVISORS

Thursday, October 3, 2019 9:00 am - 3:00 pm



- | | | |
|---|---|--|
| 1 Chart Industries
407 7th Street NW
New Prague | 8 D & K Powder Coating
2240 Howard Drive W
North Mankato | 15 Itron Inc
2401 N State Street
Waseca |
| 2 Cambria
31496 Cambria Avenue
Le Sueur | 9 South Central College
1920 Lee Boulevard
North Mankato | 16 Winegar, Inc.
1209 South State Street
Waseca |
| 3 Michael Foods
120 Tower Street S
Gaylord | 10 Dotson Iron Castings
200 West Rock Street
Mankato | 17 Everidge
304 Main Street N
Winnebago |
| 4 Booth Welding
520 18th North
New Ulm | 11 Johnson Outdoors
121 Power Drive
Mankato | 18 3M Fairmont
710 N State Street
Fairmont |
| 5 New Ulm Precision Tool, Inc
2217 South Broadway
New Ulm | 12 City of Mankato Water Resource Recovery Facility
701 Pine Street
Mankato | 19 Kahler Automation
808 Timberlake Road
Fairmont |
| 6 Parker Hannifin
2101 North Broadway
New Ulm | 13 City of Mankato Water Treatment Plant
730 Mound Avenue
Mankato | 20 Zierke Built Manufacturing, Inc.
1500 Winnebago Avenue
Fairmont |
| 7 SpecSys
2120 Broadway Street North
New Ulm | 14 Cinch Connectivity Solutions
299 Johnson Ave SW Suite 100
Waseca | 21 Valero
1444 120th Street
Welcome |

Saturday, October 5, 2019 9:00 am - 1:00 pm



- | | |
|---|---|
| ② Cambria
31496 Cambria Avenue
LeSueur | ①⑨ Kahler Automation
808 Timberlake Road
Fairmont |
| ③ Michael Foods
120 Tower Street S
Gaylord | ②① Valero
1444 120th Street
Welcome |
| ①① Johnson Outdoors
121 Power Drive
Mankato | ②② MTU America Inc.
100 Power Drive
Mankato |
| ①② City of Mankato Water Resource Recovery Facility
701 Pine Street
Mankato | ②③ MICO
1911 Lee Boulevard
North Mankato |
| ①③ City of Mankato Water Treatment Plant
730 Mound Avenue
Mankato | ②④ Alumacraft
315 W Julian Street
St. Peter |
| ①⑤ Itron Inc
2401 N State Street
Waseca | |



1

407 7th Street NW
New Prague
952.758.8180
chartindustries.com

DIRECTIONS

After turning into the Chart main office entrance, take an immediate left and park on the south side of the building (highlighted on map). Our front door is in this lot, facing south. For security purposes, our building is locked. A Chart employee will be available to let you in 15 minutes prior to the hour and assist you with completing visitor paperwork. Please arrive for the tour 10 to 15 minutes before the hour.



TOUR DETAILS

Thursday,
 October 3rd
9am-1pm

Tours every hour

Refreshments served

Employment
 applications available

Must be 16 years
 or older

Waiver needed -
 safety,
 visitor agreement,
 confidentiality

Check In/Safety Video

8:45am-9:00am	9am-9:45am
9:45am-10am	10am-10:45am
10:45am-11am	11am-11:45am
11:45am-12:pm	12pm-12:45pm
12:45pm-1pm	1pm-1:45pm

Tour Time

Please arrive 10-15 minutes prior to tour time for check in, paper work, safety instructions and PPE

EMPLOYMENT

"You may never use the products we make, but everyone uses the products we make possible."

Chart is a recognized global brand for the cryogenics industry. They design and manufacture highly engineered equipment in the liquid gas supply chain. Their products are critical components in the separation of oxygen, nitrogen and noble gases from air and in the processing and liquefaction

of natural gas. Chart's distribution and storage products and engineered systems are fundamental to the delivery and end-use of liquid gases across a multitude of applications in industry and for energy.

In the life sciences sector, Chart's MVE brand is the benchmark for biological storage systems, used for the cryogenic preservation of human and animal tissues.

Chart has eight domestic operations located in seven US states and international engineering

and manufacturing in Australia, China, the Czech Republic, Germany, Italy, France, and India. They make high quality, highly engineered products that improve people's lives, advance medical research and contribute to a cleaner, more sustainable world.

Chart Industries has more than 4000 employees globally. In their New Prague location, they have more than 450 employees. At Chart, their people are their most important competitive advantage. They offer a variety of

attractive career options, a positive work environment, and opportunities for development. Chart's New Prague location has manufacturing, support, and leadership opportunities available. Some of the roles they're recruiting for include:

- Welders
- General Laborers
- Material Handler
- Painter
- Design Engineer
- Quality Engineer
- Mechanical Engineer





C A M B R I A®

31496 Cambria Avenue
Le Sueur
507.665.5003
cambriausa.com

DIRECTIONS

Located right off of Highway 169
 (Northbound side of the road).
 Forest Prairie Road Exit onto
 Cambria Avenue.

TOUR DETAILS

Thursday, October 3rd
9am to 3pm

Saturday, October 5th
9am to 1pm

Refreshments
 served

Guided tours available
 (our facility is very
 large so be prepared
 to walk a lot)

Confidentiality
 Agreement signed
 onsite before the tour

Public tours for ages
 16 & up. All High
 School students are
 welcome to attend

On-site parking
 available

Employment
 applications available

On-Site Job Fair
Saturday,
October 5
9am - 1pm

EMPLOYMENT

Cambria is the first and only family-owned, American-made producer of natural stone surfaces. Established in 2001, Cambria was built on 70+ years of manufacturing experience in Minnesota. Cambria employs more than 2,000 in the U.S. and Canada, including nearly 600 skilled craftsmen and women at the company's nearly 1 million square foot manufacturing facility in Le Sueur.

Their employees take great pride in their work and the company's reputation for quality, exceptional craftsmanship, and beauty. There's never any skimping or cutting corners. Every natural stone surface they create is crafted with hands-on attention down to the smallest details to provide years of flawless performance.

They strongly believe

that the best countertops start with the best people. Cambria employees take charge of their career by working for a progressive company where innovation inspires people to grow and reach their full potential. Every job at Cambria is important and great ideas can come from anyone at any time.

Cambria offers competitive benefits, including health insurance, life insurance, paid time off and 401K with employer match.

CambriaUSA.com/Careers.
 #WeAreCambria

QUICK FACTS

- State-of-the-art-facility
- Family owned company
- Competitive wages + benefits, paid time off, 401K match
- Unlimited career paths
- Opportunities in:
 Production,
 Warehouse,
 Maintenance,
 Automation,
 Engineering



MICHAEL FOODS^{INC.}

**120 Tower Street
Gaylord**
507.237.4600
michaelfoods.com

DIRECTIONS

North on M-22 to Gaylord and turn right at stop sign and continue for .2 miles and turn right on to Tower Street. Parking lot is located around back and check in at Door 1.

TOUR DETAILS

Thursday, October 3rd
9am-3pm

Saturday, October 5th
9am-1pm

Guided tours,
every half hour

Children and students
welcome

Waiver completed
on site

Refreshments
served

Employment
applications
available online

EMPLOYMENT

- The Michael Foods family of businesses has grown to become a \$2 billion manufacturer and distributor of foodservice, food ingredient and retail offerings by introducing innovative products that have changed the food landscape. From helping restaurant owners enhance the quality of their menus, to supporting food manufacturers with premium ingredients, to satisfying countless consumers with our popular lines, we're a proven, innovative leader in food.
- For over 100 years, the Michael Foods family of businesses has leveraged quality ingredients and innovative processes to offer the finest products and solutions to our customers and to food-loving consumers. Today,

we're the nation's largest processor of value-added eggs—but that's just the beginning.

- Michael Foods, INC was purchased by Post Holdings in June of 2014. Now Michael Foods' sister companies include Post Cereal, Power Bar, and Bob Evans.
- In 2016 & 2017, the Gaylord Complex was award Operations of Excellence Award for outstanding results in Safety, First Past Quality, Overall Equipment Efficiencies and Direct Manufacturing Expenses.



QUICK FACTS

- The Gaylord Complex produces over 500 million pounds of egg products each year in there different forms, liquid, precooked and hard cooked.
- Michael Foods employees over 850 employees in the Sibley and LeSueur County.
- We offer competitive wages, great benefits, tuition reimbursement, annual bonus incentive, and paid time off accrual from hire date.
- Benefits include medical, dental, vision, life insurance, short term and long-term disability, and 401K match up to 6%.

- Gaylord and LeSueur locations include jobs with a rotating shifts of 12 hours and 8 hour shifts in departments for operation, distribution, maintenance, and farm locations.





**520 18th North Street
New Ulm
507.382.2399
boothwf.com**

TOUR DETAILS

Thursday,
October 3rd
9am-3pm

Guided tours

Refreshments
served

Employment
applications available



EMPLOYMENT

Booth Welding and Fabricating, LLC. now doing business as Booth Innovation and Design, is a family owned company specializing in product design, fabrication and installation. Their experienced design team provides service from on-site consultations and ideation through to the engineering and drafting process. With a full machine shop, including a CNC waterjet and CNC press brake, the highly experienced fabrication staff can cut, shear, bend, punch or roll a variety of metals and other materials to create precision products. They do quality TIG, MIG, arc, spot and pin/stud welding.

Booth does installations including structural steel, plant equipment, production line and workstation jobs. They have their own line of

useful products for home and travel. Additionally, this team has experience repairing trailers, farm/heavy equipment, metal railings, holding tanks....If it's broke they can probably fix it!

In 2006, after 30 years fabrication experience, Leonard Booth created Booth Welding and Fabricating. In 2008 Troy Booth joined his father in the operation of the family business. The company has grown much over the years and now includes machinists, machine operators, welders, a CAD Draftsman, a commercial artist, and support staff. The business is now doing much more than just welding and fabricating.

Throughout New Ulm one can see evidence of the contribution this company has made to the community. The red bicycle racks with the heart

design were constructed by Booth Welding and Fabricating, as was the eagle sculpture located at the new high school and a lighted memorial sculpture located at the New Ulm Medical Center. There are numerous residential and commercial railings throughout the area and many industrial projects at local manufacturing plants, including process pipe jobs, that have been done by this diverse company. From the artistic to the industrial, Booth Welding and Fabricating/ Innovation and Design provides a wide range of capabilities to our community.





2217 S Broadway
New Ulm
507.610.7752
newulmprecisiontool.com

DIRECTIONS

New Ulm Precision Tool, Inc. is located at 2217 South Broadway, New Ulm which is on the south end of town between the Best Western Plus (Green Mill) and Maday Motors.

TOUR DETAILS

Thursday,
October 3rd
9am-6pm

Guided tours



Handicap
accessible

Refreshments
served

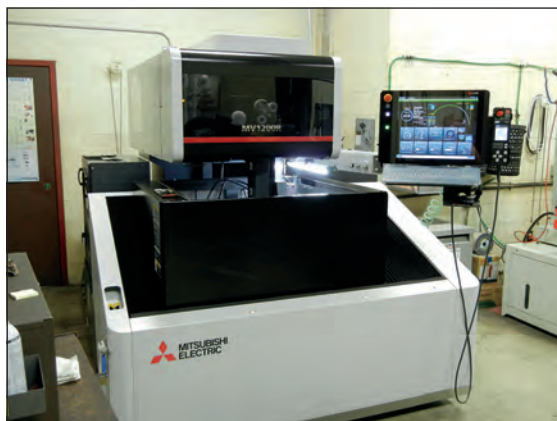
WHY WORK HERE

New Ulm Precision Tool offers well paid positions to its employees with excellent benefits such as health and dental insurance, 401K plans, company paid short and long term disability, life insurance, profit sharing, and a company paid day off for your yearly physical.

EMPLOYMENT

New Ulm Precision Tool, Inc. is a local tool and die shop that was established in 1974. They have earned their place as a leader in the tool and die industry by completing their work to the highest of standards as well as the customer's expectation. They design and fabricate a broad range of custom tooling for customers locally and nationally, such as: AMPI, 3M, Bobcat, John Deere, Case New Holland, and many more. Tooling or projects they commonly work on would include: Hydraulic and manual workholding fixtures for CNC machining centers, dedicated machines, tool crib/replacement parts, medium run production parts, inspection gages and more. Their focus is to ensure the end product is user friendly for operators and set-up

personnel and meets their expectations. The success of their company is a result of strong customer relationships by involving them throughout the design and build process and using the customers preferred components and formats.



QUICK FACTS

- In 2007, New Ulm Precision Tool was sold to Specialty Manufacturing Company (SMC), a privately family owned company located in White Bear Lake.
- The SMC "group" was awarded as the top 150 workplaces in Minnesota consecutively for the past three years

- They were also ranked number 1 for the benefits out of those 150 top workplaces.





2101 N Broadway
New Ulm
507.233.2305
parker.com

DIRECTIONS



TOUR DETAILS

Thursday,
 October 3rd
9am-3pm

Refreshments
 served

Employment
 applications available

EMPLOYMENT

With annual sales exceeding 13 billion, Parker Hannifin is the world's leading diversified manufacturer of motion and control technologies and systems, providing precision engineered solutions for a wide variety of industrial, mobile, and aerospace markets.

We have more than 300 manufacturing plants worldwide and are the only company to offer our customers a choice of hydraulic, pneumatic, electromechanical, and computer motion control solutions.

Parker employs approximately 58,000 people in 50 countries. Additionally we have the largest global distribution network in our field, with more than 13,000 distributors serving over 450,000 customers in 1,100 markets.

Innovative Automation Products and System Solutions

The Parker Electromechanical Division brings together leading technologies in industrial automation which include linear actuators, electronic drives and controls, and electric servo motors and gearheads

Parker Hannifin New Ulm

For 25 years our New Ulm location has manufactured and delivered high quality servo motors, gearheads and gearmotors.

Standard products and

core expertise support customer application development through the custom engineered solutions process. With a focus on providing a superior customer experience, the business unit has grown in industries such as automotive, aerospace, semiconductor, robotics and recently vehicle electrification.

With over 100 employees in the New Ulm facility, work responsibilities include

design engineering, quality control, supply chain management, marketing and sales as well as a variety of positions in assembly, machining, and repair.





**2120 N Broadway Street
New Ulm
320.269.3227
specsys.org**

DIRECTIONS

From US-14 W/ MN-68 W / N
Broadway St, turn right onto 20th
St N, turn left onto N Broadway St.

TOUR DETAILS

Thursday,
October 3rd
9am-3pm

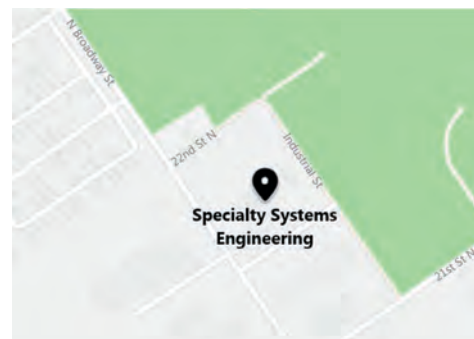
Guided tours



Handicap
accessible

Refreshments
served

Employment
applications available

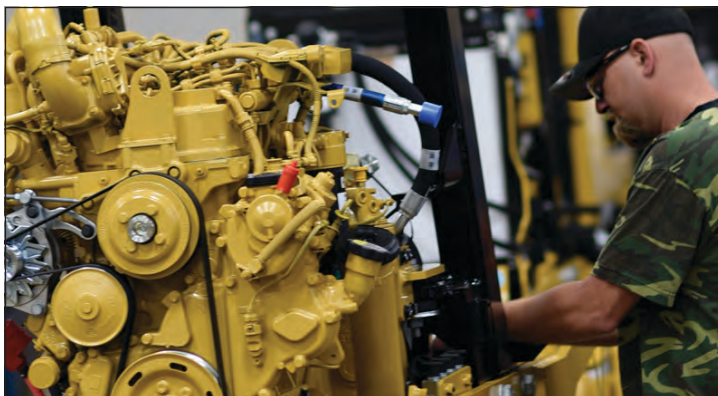


EMPLOYMENT

Specialty Systems (SpecSys Inc.) was founded in 1997. In its early stages, the home-based consulting business primarily supported the design and engineering departments of machinery and equipment manufacturers. SpecSys quickly grew to include additional staff and now employs nearly 300 people. As a full service manufacturer, SpecSys, Inc. has career opportunities including Fabrication, Machining, Welding, Painting and Surface Prep, Mechanical Assembly and more.

SpecSys, Inc. is an ISO 9001:2015 certified full service provider of contract engineering and manufacturing services. In addition to their New Ulm facility, SpecSys, Inc. has five other operations throughout Minnesota, South Dakota

and Wisconsin. With than 20 years of success, they can offer highly skilled engineering and manufacturing solutions for the Agriculture, Mining, Construction, Forestry, Rail, and Oil/Energy industries. Today the manufacturing facilities include over 700,000 square ft. of manufacturing facilities, and provides nearly 300,000 hours annually of skilled manufacturing labor.






2240 Howard Drive W
North Mankato
507.388.4100
dkpowdercoating.com

DIRECTIONS

D&K Powder Coating is located at 2240 Howard Drive West, North Mankato, MN 56003. Their front parking lot is open and overspill parking is located to the East by the gravel.

TOUR DETAILS

Thursday,
 October 3rd
9am-3pm

 Handicap
 accessible

EMPLOYMENT

D&K Powder Coating is an ISO 9001-2015 certified-and-registered powder coating company offering complete powder coating services and media blasting services to its dedicated and loyal customers. D&K operates out of a 47,000 square foot facility with state-of-the-art equipment which can accommodate parts up to 16' wide, 12' high and 45' long in a custom-built Col-Met Batch Oven. D&K features a Col-Met Paint Booth and GEMA paint application systems. Their steel grit media blast booth can accommodate parts up to 20' wide, 14' high, and 51' long.

D&K Powder Coating bases its business model and strategic plan on being a provider of custom paint applications ranging from one-piece runs to production-level requirements. They aspire

to provide their customers quality products that meet and exceed the established standards set forth by customers, suppliers, and regulatory guidelines.

D&K Powder Coating's mission is to deliver a finish of the highest quality possible, at a competitive price, on time.

History:

D&K Powder Coating was founded in 2013 by Dana and Kathy Schnepf. The company was originally located at 1415 First Avenue in Mankato, MN. In 2015, D&K Powder Coating moved to its current location at 2240 Howard Drive West in North Mankato, MN.

Community/State Role:

D&K Powder Coating offers its services to the Mankato

community and Midwest. They proudly sponsored the 2019 Mankato Air Spectacular, supported local fire departments, and donated to the Children's Museum of Southern Minnesota.

Products/Services Offered:

D&K Powder Coating offers complete powder coating and media blasting services.

of Employees:

D&K Powder Coating currently employs 40 people.

Types of Career Opportunities:

D&K Powder Coating offers a variety of positions such as: Powder Painter, Blaster, Washer, Shipping, Receiving, Packaging, Oven Operator, and Production.





South Central COLLEGE

**1920 Lee Boulevard
North Mankato**

507.389.7200
**[southcentral.edu/
manufacturing](http://southcentral.edu/manufacturing)**

DIRECTIONS

From US-169 or MN-22,
exit on US-14 West
Follow 14 West into North Mankato
Exit onto Lookout Drive and go
south (left)
Turn left onto Lee Boulevard
Park in the front Visitor Lot directly
off of Lee Boulevard by the Main
Entrance (Door 1)
Overflow parking is available in
the Red Lot by Door 30

TOUR DETAILS

Thursday,
October 3rd
9am-3pm

Guided public tours



Handicap
accessible

All ages welcome

WHY MANUFACTURING?

In 2017, the average annual wage for those working in manufacturing in Minnesota was \$65,728. That's 17 percent higher than the average wage in other industries. However you fit into the world of manufacturing, you'll know you have a future in this high-growth, high-demand career field.

WHY SOUTH CENTRAL COLLEGE?

Today's sophisticated manufacturing environment calls for individuals with an advanced technical education. South Central College (SCC) offers programs in machine tool technology, mechatronics and welding. All these programs provide students an opportunity to earn industry-recognized credentials, which lets employers know SCC graduates have the knowledge necessary to work in today's high tech manufacturing world. With a variety of certificate, diploma and associate degree options, students can also decide how long they want to go to college and can take their education in stages based on their career goals.

In addition, students can start their career in advanced manufacturing while completing their

college degree. SCC's Learn Work Earn program lets students work part-time for an area manufacturer while going to school. On-the-job training is combined with traditional classroom instruction, allowing students to master their technical skills, gain experience in the field and earn wages to offset the cost of their education.



QUICK FACTS

- South Central College has been offering advanced manufacturing education since the college's inception in 1946.
- The number of individuals employed in manufacturing in Minnesota has grown every year since 2010, with the overall number of manufacturing employees increasing by 9% from 2010 - 2017.
- For 10 years straight, the average WEEKLY WAGE for employees in manufacturing has risen, soaring from \$1,005 in 2007 to \$1,264 in 2017, a 26% overall increase.

10

**200 West Rock Street
Mankato**
507.345.5018
dotson.com



DIRECTIONS

Dotson is located at 200 West Rock Street right next to Riverfront Park. Rock Street is located off of Front Street in Old Town Mankato. Travel West on Rock Street toward the river.

TOUR DETAILS

Thursday,
October 3rd
9am-3pm

Guided tours,
every half hour



Handicap
accessible

Must have
closed toed shoes

Applications
available online

EMPLOYMENT

The Dotson Company was founded, in Mankato, in 1876 as a blacksmith shop and has evolved over the years into a highly automated ductile iron foundry and CNC machine shop. Dotson Foundry employees 160 people working 5 days 24 hours per day. Dotson is known in the industry as being highly automated in making and processing castings. Finished products are used in a variety of applications across the globe including lawn mowers, fire trucks, concrete mixers, farm equipment and skid steers. Dotson niche casting size is 15lb up to 50lbs. Dotson is employee owned and focused on creating a world class company by staying true to their core values

Advancing with innovation, focusing on results, caring about people, living with integrity.

Other information:

The Dotson family has been involved since 1923. About 3,000,000 parts are cast each year in the foundry. Over 90% of the material in finished castings comes from recycled products. Dotson is the only foundry with employee air conditioning vents for hot areas.

Liquid iron comes out of the furnace at 2,800 degrees.





11

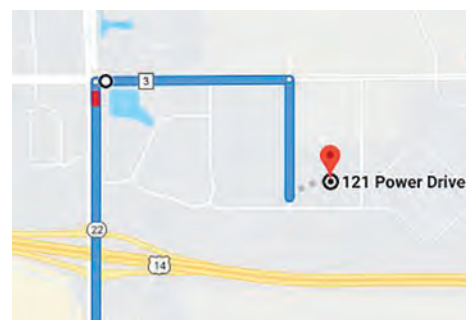
121 Power Drive Mankato

507.345.4623

johnsonoutdoors.com
minnkotamotors.com

DIRECTIONS

Johnson Outdoors is located at 121 Power Drive on the Northeast side of Mankato. From Highway 14, travel North on Hwy 22, Go East on County Rd 3, South on Power Drive, facility will be on left.



TOUR DETAILS

Thursday,
October 3rd
9am-3pm

Saturday,
October 5th
9am-1pm

Refreshments
served

Employment
applications available

EMPLOYMENT

Johnson Outdoors is a leading global outdoor recreation company that turns ideas into adventure. Headquartered in Racine, Wisconsin, the company designs, manufactures and markets a portfolio of winning, consumer-preferred brands across four categories: Fishing, Diving, Camping, and Watercraft. Over 1100 employees worldwide are committed to providing innovative, top-quality recreation products that make it easy for people to have fun outdoors. A complete listing of Johnson Outdoors products can be found at www.johnsonoutdoors.com.

Fishing division encompasses the Mankato facilities and as a whole and consists of the Minn Kota®, and Cannon® brands. Minn Kota® is the world's leading manufacturer of electric trolling motors, as

well as offering a complete line of shallow water anchors, battery chargers and marine accessories. Cannon® is the leader in controlled-depth fishing and includes a full line of downrigger products and accessories.

Johnson Outdoors as a global enterprise celebrated its 45th anniversary in 2015; however, the company has an even longer history in Mankato. Johnson Reels began with two Mankato fishermen, Lloyd E. Johnson and H. Warren Denison. In 1949 Lloyd Johnson decided to build a fishing reel that was "tangle-free." Denison saw the prototype and together they made modifications. The company flourished and continued to grow with the acquisition of Minn Kota Electric Fishing Motors in 1969.

The Minn Kota Electric Fishing Motor was founded

in Moorhead, Minnesota in 1932. It was called Minn Kota because of its proximity to the MINNesota and North DaKOTA border. Minn Kota is the oldest active manufacturer of electric fishing motors in the world. Manufacturing moved from Moorhead to Mankato in 1979.

In 1970 Johnson Reels and Minn Kota Electric Fishing Motors joined the Johnson family of companies located in Racine, Wisconsin. Cannon joined the business in 2005.

Even today, Johnson Outdoors is still sometimes referred to as Johnson Reels locally.



QUICK FACTS

- Johnson Outdoors currently has two Mankato locations.
- Mankato facilities approaching 250 Employees
- Some of the earliest Minn Kota trolling motors used Ford Model A starters. These first units were designed with the motor out of the water. Not at all like today's designs.
- Other Johnson Outdoors Product categories;
 - Fishfinders
 - Digital Maps
 - Family Tents
 - Personal Cooking systems
 - Canoes
 - Kayaks
 - Diving Gear





12

Water Resource Recovery Facility (WRRF)

701 Pine Street
Mankato
507.387.8738

TOUR DETAILS

Thursday, October 3rd
9am-3pm

Saturday, October 5th
9am-1pm



Handicap
limited
accessibility

Hourly tours

Refreshments
served

DIRECTIONS

Come through the main gate and take a left into the parking areas. Blue Boxes highlight main parking areas. Bus parking and additional vehicle parking is highlighted in yellow. Proceed to the main entrance on the North side of the Control building.



EMPLOYMENT

Mankato, Minnesota provides city services to help enhance quality of life. Mankato is leading the way as a vibrant, diverse, regional community. Mankato is committed to being responsive, efficient, innovative, neighborly and serving the greater good.

The Mankato Civic Center staff deliver outstanding experiences in indoor and outdoor venues. Community Development staff plans and manages for growth and expansion including inspections, affordable

housing and transit. Public Safety (police and fire) work with the public to keep Mankato safe. Public Works staff help plan and design new construction and reconstruction of Mankato's sanitary sewers, water mains, streets, street lights, the regional airport, sidewalks, parks, public landscaping and flood protection system. Services in Public Utilities include curbside recycling and garbage service, spring clean-up, leaf pick-up, waste processing, water treatment and wastewater treatment at the Water

Resource Recovery Facility (WRRF). Mankato has a nationally renowned water resource recovery facility and provides service through a partnership to North Mankato, Eagle Lake, Madison Lake, Skyline and South Bend Township.

In 2018, Mankato celebrated 150 years of city services, and in 2020 celebrates 25 years of communication and engagement using Mankato's website: mankatomn.gov. Since citizen input is important and helpful when making city decisions, the public are

encouraged to participate in a variety of ways, such as using "Sound off Mankato," an online engagement tool. Residents can also make Mankato better by completing an online customer service request... a 24-hour service.

For questions or more information contact staff at 311 or 507-387-8600.



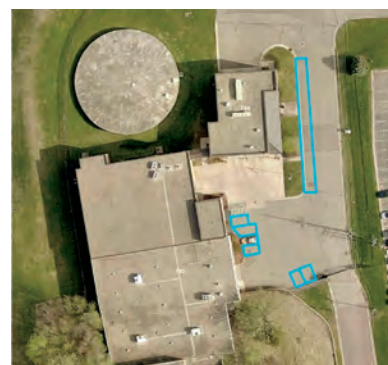


13

**Water Treatment
Plant (WTP)
730 Mound Avenue
Mankato
507.387.8661**

DIRECTIONS

Press the buzzer on the touch pad located outside the main gate. The operator will open the gate. Park in any of the designated parking spots in front of the facility. Over-flow parking will be along the curb starting by the flag pole. Proceed to the main entrance.



TOUR DETAILS

Thursday, October 3rd
9am-3pm

Saturday, October 5th
9am-1pm



Handicap
accessible

Hourly tours

Refreshments
served

EMPLOYMENT

Mankato, Minnesota provides city services to help enhance quality of life. Mankato is leading the way as a vibrant, diverse, regional community. Mankato is committed to being responsive, efficient, innovative, neighborly and serving the greater good.

The Mankato Civic Center staff deliver outstanding experiences in indoor and outdoor venues. Community Development staff plans and manages for growth and expansion including inspections, affordable

housing and transit. Public Safety (police and fire) work with the public to keep Mankato safe. Public Works staff help plan and design new construction and reconstruction of Mankato's sanitary sewers, water mains, streets, street lights, the regional airport, sidewalks, parks, public landscaping and flood protection system. Services in Public Utilities include curbside recycling and garbage service, spring clean-up, leaf pick-up, waste processing, water treatment and wastewater treatment at the Water

Resource Recovery Facility (WRRF). Mankato has a nationally renowned water resource recovery facility and provides service through a partnership to North Mankato, Eagle Lake, Madison Lake, Skyline and South Bend Township.

In 2018, Mankato celebrated 150 years of city services, and in 2020 celebrates 25 years of communication and engagement using Mankato's website: mankatomn.gov. Since citizen input is important and helpful when making city decisions, the public are

encouraged to participate in a variety of ways, such as using "Sound off Mankato," an online engagement tool. Residents can also make Mankato better by completing an online customer service request...a 24-hour service.

For questions or more information contact staff at 311 or 507-387-8600.



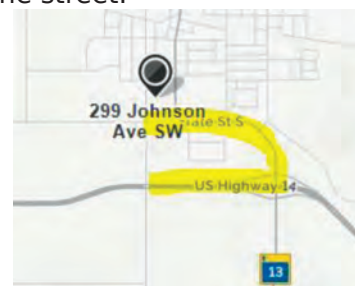


cinch
CONNECTIVITY SOLUTIONS
a bel group

299 Johnson Avenue SW
Suite 100, Waseca
507.833.8822
belfuse.com/cinch

DIRECTIONS

Cinch Connectivity Solutions is located at 299 Johnson Avenue S.W. Suite 100. From Highway 14, travel North on Highway 13 and take left onto Johnson Avenue. Parking is available in visitor's parking, on the street and in lot across the street.



TOUR DETAILS

Guided Tours
every 30 minutes on
Thursday, October 3rd
from **9am-3pm**

Must wear closed toe
and closed heel shoes
and no high heels

Career opportunities

Visitors must sign a
Visitor Export Non-
Disclosure agreement



Handicap
accessible

Students are encouraged to
join us!! (7th grade and higher)

Prizes

Refreshments served

ADULT VISITOR ENTRANCE REQUIREMENTS:

Must be a U.S. Person
(i.e. U.S. Citizen or
Permanent Resident)

Must provide a valid
government issued
photo identification

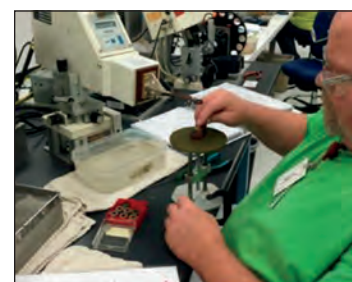
WHY WORK HERE Cinch Connectivity Solutions offers career opportunities in the Engineering, Finance, IT, HR, Customer Service, Procurement and Production areas such as Machining, Plating, Quality, Warehouse and Assembly. They also offer Job Shadow and CNC Machinist Training Programs.

EMPLOYMENT

Cinch Connectivity Solutions is a vertically integrated supplier of high quality, high performance connectors, fixed length and semi rigid cable assemblies from DC to 50 GHz, and custom solutions. Their product lines deliver custom-engineered solutions to satisfy the most demanding and complex requirements. Cinch Connectivity's products support aerospace, military, wireless communications, data networking, test and measurement, telecommunications, broadcast, medical, oil and gas and other harsh environment applications. Combined with the strength of our parent company, Bel Fuse Inc., Cinch Connectivity Solutions aims to provide an unparalleled offering to the vast array of industries they serve.

QUICK FACTS

- The Waseca business has been an active employer in the Waseca community for over 75 years. Once part of the original E.F. Johnson business, E.F. Johnson began manufacturing radio components in 1923, becoming well-known 20 years later for its radios installed inside WWII military vehicles.
- After a series of acquisitions, the business was eventually sold to Bel Fuse, the parent company of Cinch Connectivity Solutions. Bel Fuse is a headquartered in Jersey City, NJ with a global footprint which covers the Americas, Europe and Asia.
- The Waseca plant is a vertically integrated facility that employs 220 associates.
- They have the capability of providing design solutions to customers for unique operational challenges in a global environment.
- Machine Shop tolerances include 100th thickness of a human hair. Their machining capabilities also include a high precision turning machine capable of machining down to 1 micron. This machine is one of only two that exist in the world.
- They are proud to be a member of the Waseca Chamber of Commerce, and annually provide assistance to the community in the form of charitable giving, scholarships and employee volunteers.



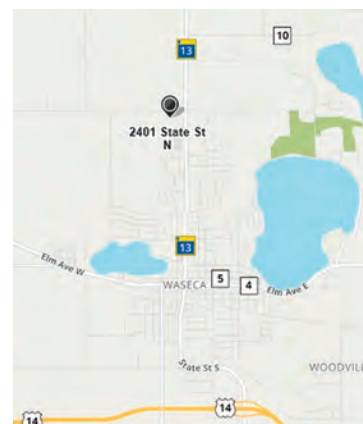


15

**2401 N State Street
Waseca**
507.781.4300
itron.com

DIRECTIONS

Take Hwy. 14 to Waseca.
Take Hwy. 13 North to 22nd Ave
NW. Turn Left onto 22nd Ave NW
and take a right onto the frontage
road leading to Itron.



TOUR DETAILS


Student Focused
Thursday, October 3rd
12-3pm

General Public Focused
Saturday, October 5th
9am-1pm

Guided Tours,
every half hour

Virtual/Video
tour and presentation
of company

Children must be
accompanied
by an adult

 Handicap
accessible

Closed toed shoes
required

Employment
applications available
online

WHO WE ARE AND WHAT WE DO

Itron was founded in Hauser Lake, Idaho in 1977 by a small group of innovative engineers intent on finding more efficient ways to read meters. Today, Itron enables utilities and cities to safely, securely, and reliably deliver critical infrastructure services to communities in more than 100 countries. Their portfolio of smart networks, software, services, meters and sensors helps customers better manage electricity, gas and water resources for the people they serve. By working with customers to ensure their success, Itron helps improve the quality of life, ensure the safety and promote the well-being of millions of people around the globe. Itron is dedicated to creating a more resourceful world. Join us: www.itron.com.

CAREERS AT ITRON:

Engineering

- Hardware & Software Engineering
- Manufacturing & Controls Engineering
- Firmware Engineering
- Mechanical, Systems, & Field Engineering
- Quality Engineering

Production

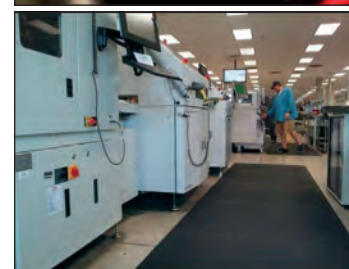
- Electronic Assembly
- Technicians
- Production Supervision
- Warehouse/Distribution

Business

- Management
 - Information Technology
 - Marketing & Communications
 - Finance & Accounting
 - Human Resources
 - Materials Planning
 - Customer Service
- And many more...

QUICK FACTS

- Waseca is one of Itron's very first manufacturing sites, most notable for producing gas and water endpoints. They have a very team-focused environment and 350 employees across manufacturing, product research and development, engineering test services, marketing and more.
- Itron provides competitive compensation and a comprehensive benefits package.
- Benefits include medical, dental, vision, life and disability insurances, 401k, wellness programs, tuition reimbursement, and more.





1209 S State Street
Waseca
507.835.3495
winegarinc.com

DIRECTIONS

1209 South State Street
 Southern end of Waseca on MN
 Highway 13
 East side of the road.

PARKING, ENTRANCE:

Parking available in front of the plant. Entry for the tours will be through the office entrance on the west side of the building closest to the highway.

TOUR DETAILS

Thursday,
 October 3rd
9am-3pm

Children must be
 accompanied by an adult
 teacher, guardian, or parent



Handicap
 accessible

Refreshments
 served

Employment
 applications available



EMPLOYMENT

- Winegar, Inc was officially incorporated nearly 40 years ago as Winegar Brothers Inc. They are in the business of producing precision machined parts for many major manufacturing companies across the United States.
- Winegar, Inc machined parts are used in everything from medical devices, farm machinery, cars, trucks, pickups, recreational vehicles, and industrial equipment throughout the United States.
- Winegar is the largest private/locally owned employer in Waseca.
- Winegar, Inc sends parts it manufactures to locations throughout the US, Canada, Mexico, France, Italy and China.
- 45% of our 85 employees have been with the company for over 15 years.
- Major events in the company's nearly 40 year history have included:
 - **1979:** Winegar Brothers, Inc. was incorporated
 - **1983:** Occupied it's newly expanded 10,000 square foot building located on the Winegar Farm just South of Waseca .
 - **1987:** Winegar Brothers moved to what was formerly the Herters manufacturing plant on the southern end of Waseca.
 - **1997:** Ownership transition to current management / ownership team began, and was completed in 2005.
 - **1998:** Building addition of 10,000 square feet and an adjacent 20,000 square foot building was purchased.
 - **2002:** Winegar, Inc received ISO 9001:2000 certification.
 - **2008:** Manufacturing plant now occupies 100,000 square feet
 - **2012:** Annual Sales levels increased to nearly \$20 Million.
 - **2013:** Latest 20,000 square foot expansion project completed.
 - **2017:** ISO registration updated to the latest standard : 9001:2015
 - **2019:** installed our second multi pallet automated machine loading system and 2 new multi axis/ function turning centers. Company now operates over 60 CNC machines and other supporting equipment.





**304 Main Street
Winnebago**
507.893.3888
everidge.com

DIRECTIONS

Located directly on Highway 169,
north end of Winnebago



TOUR DETAILS

Thursday,
October 3rd
9am-2pm

Guided tours

Register to
win door prizes

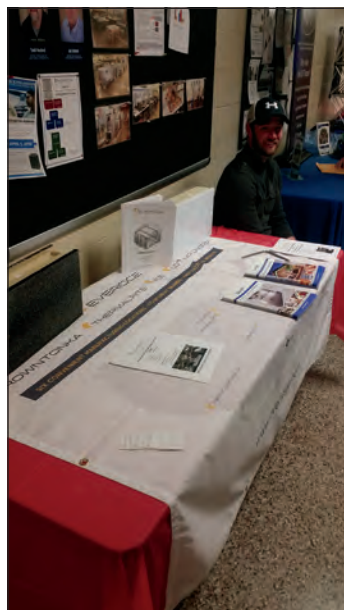
Refreshments
served

Employment
applications available

EMPLOYMENT

Everidge is the nation's premier commercial refrigerated services and cook-chill specialty solutions provider. Headquartered in Plymouth, MN with operations and manufacturing facilities in Winnebago, MN, Rancho Cucamonga, CA, Andover, KS, Coveseville, VA and Greeneville, TN, Everidge has nearly 600 employees worldwide. Their family of brands include CrownTonka, ThermalRite, International Cold Storage and LoTemp Doors. For more information, visit www.everidge.com.

The Minnesota manufacturing center has been in operations for over 30 years. Located directly on Highway 169 in Winnebago, the facility offers convenient access for vendors, clients, distribution and employees.





**710 N. State Street
Fairmont**
507.235.3391
3M.com

DIRECTIONS

Please park in visitor parking and enter the building through the southwest entrance

TOUR DETAILS

Thursday,
October 3rd
9am-3pm

Virtual tour or video
and presentation
of company

EMPLOYMENT

3M was founded in Northern Minnesota in 1902. Over the last century, the company has grown into a leader in global manufacturing with over \$32 billion in sales and over 90,000 employees globally. 3M takes its scientific innovations and applies them to solve real-world problems. This focus of applying science to life is at the heart of the company's vision of "3M technology advancing every company, 3M products enhancing every home, 3M innovation improving every life". The company's ability to come up with new, innovative solutions to every day problems is one of its greatest strengths. 3M's investment in research and development ensures the company will continue to grow and adapt to meet the needs of a rapidly changing world for years to come.

3M Fairmont was founded over 70 years ago and is one of the oldest 3M manufacturing facilities. Employing approximately 130 people, 3M Fairmont produces products such as Bumpons™, Dual-Lock™, extruded bonded loop, and Hook and Loop™. 3M Fairmont is a proud community partner, regularly donating 3M funds and products to a variety of local organizations. There are a variety of career opportunities at the site, including production operators, supervision, supply chain, and engineering.

A core value of 3M Fairmont and 3M as a whole is the company's



commitment to sustainability. Since 1975, the company has prevented over 2.5 million tons of air, water, and waste pollution. The company has set ambitious goals to continue their commitment to sustainability, including increasing their renewable energy usage and continuing to reduce greenhouse gas emissions. 3M Fairmont is a proud partner in 3M's commitment to sustainability and has

been landfill-free for over 10 years.





**808 Timberlake Road
Fairmont**
507.235.6648
kahlerautomation.com

TOUR DETAILS

Thursday,
October 3rd
9am-3pm

Saturday,
October 5th
9am-11am



Handicap
accessible

Guided tours,
every half hour

Children must
be accompanied
by an adult

Refreshments
served

Employment
applications available

DIRECTIONS

From Mankato take Hwy 60 west for 25 miles to Hwy 15 interchange, then south on Hwy 15 for 20 miles. Take I-90 west detour to 190th Avenue; turn left onto 190th/Bixby Road. Drive south 2 miles; turn right onto 120th Street. Drive west 1 mile to Timberlake Road.



EMPLOYMENT

Kahler Automation traces its lineage back to 1949 when Fairmont native Roy Kahler started Kahler Electric. Eventually his son Wayne created an "automation division" within the company to serve the area's farming community, doing programmable logic controller work with hog facilities and barn ventilation controls. In the late '80s Kahler developed its first Fluid Dispensing System, utilizing weigh tanks to measure chemicals and dispense them into mini-bulk containers; its tremendous success soon spurred the formation of Kahler Automation. Having outgrown their original location on Winnebago Avenue, they've been at their 36,000 sq. ft. facility in Fairmont's Industrial Park since 2007.

Now an industry leader in agricultural and industrial

bulk material handling, Kahler continues to develop innovative products and expand into new markets, partnering with farmers cooperatives, chemical and fertilizer manufacturers, agronomy service providers, transportation businesses, equipment manufacturers, and producers of food, fiber, and fuel. Kahler's hardware and software systems measure, blend, and track bulk products around the world, and its panels proudly bear the UL mark of a high-quality panel manufacturer. In addition to

dry & liquid bulk material handling of all sorts, Kahler's truck traffic control technology offers integrated system for site access, vehicle management, and traffic flow for any kind of facility.

Grown from strong ag roots, Kahler has become a global player in industrial automation while supporting the families and communities of 75 employees in southern Minnesota. Careers at Kahler Automation include Electrical Engineer, Software Engineer, Electrical Technician, CAD

Specialist, Field Technician, Technical Support, Mechanical Assembly, Sales Management, and Project Coordinator, plus opportunities in Finance, Marketing, Training, Inside Sales, and more. Education paths taken by Kahler employees include both four-year degrees — such as computer engineering, electrical engineering, business, etc. — and two-year degrees — commercial wiring, computer aided drafting & design, and industrial instrumentation, among many others.

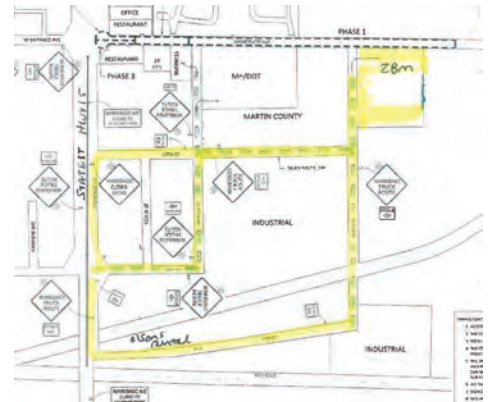


20

**1500 Winnebago
Avenue, Fairmont**
507.399.2154
zierkebuilt.com



DIRECTIONS



TOUR DETAILS

Thursday,
October 3rd
9am-3pm

Guided tours

Refreshments
served

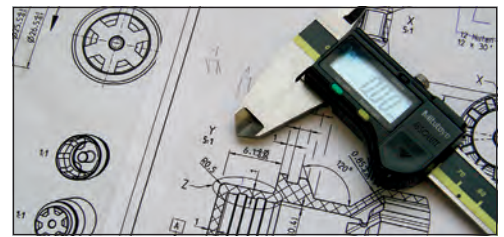
EMPLOYMENT

Zierke Built Manufacturing has been providing custom manufactured goods to the world since 1981.

The southern Minnesota company has been building products—such as trailers and containment storage—for customers encompassing the United States and Canada, and as far away as Japan.

From its humble beginnings out of a garage in Elmore, MN to its newest and largest facility located not far away in the City of Fairmont, ZBM and its steady expansion has helped the community grow by offering an ever-increasing need for jobs. Just a preview of the current positions filled by over 50 full-time employees include welding, brake press operation, wiring,

assembly, painting and prepping, sales, engineering, and part-time general labor.





21

1444 120th Street
Welcome
507.728.4000
valero.com

TOUR DETAILS

- Thursday, October 3rd **9am-3pm**
- Saturday, October 5th **9am-1pm**
- Guided tours for over 18 years only
- Waiver & liability release required
- Guided tours by reservation or as available
- Pants and closed-toed shoes required
- Virtual plant tour - available during all hours and people <18 years

DIRECTIONS

Interstate 90:
Take Welcome exit #93 turn South
off of exit
Go 1 mile south to stop sign
At stop sign turn East (left) on
120th Street
Go East 1.5 miles - Valero will be
on the North (left)
Turn in cement driveway,
follow driveway to parking lot and
Admin building



ABOUT VALERO

Valero Energy Corporation, through its subsidiaries (collectively, "Valero"), is an international manufacturer and marketer of transportation fuels and other petrochemical products. Valero, a Fortune 50 company based in San Antonio, Texas, is an independent petroleum refiner and ethanol producer. Assets include 15 petroleum refineries with a combined throughput capacity of approximately 3.1 million barrels per day and 14 ethanol plants with a combined production capacity of 1.73 billion gallons per year. The petroleum refineries are located in the United States, Canada and the United Kingdom, and the ethanol plants are located in the Mid-Continent region of the U.S. Valero also is a joint venture partner in Diamond Green Diesel, producing renewable diesel fuel at North America's largest biomass-based diesel plant in Norco, Louisiana. Valero sells its products in the wholesale rack or

bulk markets in the U.S., Canada, the U.K., Ireland and Peru. Approximately 7,400 outlets carry Valero's brand names. Please visit www.valero.com for more information.

A Fortune 50 company based in San Antonio, Texas with approximately 10,000 employees worldwide.

A Valero Renewables plant employs more than 70 full-time personnel.

CAREER OPPORTUNITIES:

Process Operator, Shipping/Receiving Operator, Maintenance Technician, Instrument & Electrical Technician, Engineering, Accounting, Commodities Marketing, Administrative services, Engineering Intern/Coop students

Welcome plant was constructed by VeraSun Energy in 2006-2008. Valero purchased the facility in 2009 and began operating the facility.

QUICK FACTS

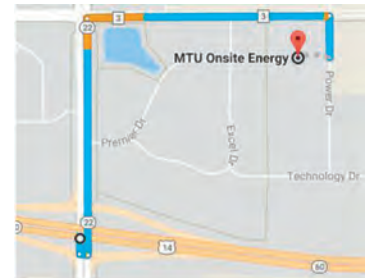
- A Valero Renewables plant can process up to 49 million bushels of corn into as much as 140 million gallons of ethanol, and up to 368,000 tons of distillers feed grains, each year.
- Valero has been able to transfer operational best practices of its refineries to its ethanol plants, which produce ethanol and distillers grains for both domestic and export markets, accounting for more than 20 percent of total U.S. ethanol exports.
- Employees pledged or raised more than \$42,900 for United Way for 2019, with a company match projected to bring total plant contributions to approximately \$64,100.
- Participating plants each distributed \$35,000 in proceeds from the Valero Texas Open and Benefit for Children to local children's charities in 2018.
- Plant employees and their families logged approximately 2,300 hours for a variety of volunteer events each year, benefiting such efforts as Habitat for Humanity, Kinship, CREST, Humane Society, Heaven's Table Food Shelf and many others.



**100 Power Drive
Mankato**
507.625.7973
mtuonsiteenergy.com

DIRECTIONS

MTU Onsite Energy will be holding tours at 100 Power Drive. The facility is east of the Victory Drive and Highway 22 intersection, just beyond Excel Drive entrance the Eastwood Industrial Center.



TOUR DETAILS

Saturday, October 5th
9am-1pm

Guided tours

Virtual/Video
presentation



Handicap
accessible

Refreshments
served

Employment
applications available

WHY WORK HERE Working at MTU Onsite Energy offers a world of experiences, right here in Mankato. We are part of the Rolls-Royce Group, which consists of over 50,000 employees globally. Our power generation systems are trusted worldwide to provide reliable uninterrupted power wherever it is needed. We offer excellent benefits including medical, dental, paid holidays and vacation, continuing education, 401k and much more.

EMPLOYMENT

MTU Onsite Energy, part of the Rolls-Royce Group, is a leading producer of distributed energy systems for use in emergency standby, prime power and cogeneration applications. The company's complete power system solutions are used throughout the world to provide uninterrupted power supply for applications as diverse as data centers and dairy farms. As a global leader in power generation, MTU Onsite Energy is proud to have been part of the Mankato community for more than 60 years. For more information, please visit www.mtuonsiteenergy.com

QUICK FACTS

- Trusted by global technology companies to provide mission critical standby power supply
- 300 local employees; part of 50,000 Rolls-Royce employees worldwide
- Creating hands-on learning opportunity for Mankato-area youth through Youth Employment Acceleration Program (YEAP) apprentice program
- Serving diverse applications from data centers to dairy farms





a **WABCO** company

**1911 Lee Boulevard
North Mankato**


**507.386.4058
mico.com**

DIRECTIONS

MICO is located at 1911 Lee Blvd in Upper North Mankato, across the street from South Central College and next to KEYC.

TOUR DETAILS

Saturday, October 5th
9am-1pm

 Handicap accessible

Register to win
door prizes

Refreshments
served

EMPLOYMENT

Since 1946, MICO has steadily provided high quality brake systems and components to customers all over the world for off-highway applications. The North Mankato facility is a completely integrated design, manufacturing, and sales operation constantly creating new and innovative technologies for hydraulic vehicle braking, controls, and stabilization.

In 2016, MICO was purchased by WABCO, a global developer of pneumatic and electric vehicle control systems, creating the world's first provider for both hydraulic, pneumatic, and hybrid brake systems. WABCO and MICO continue to partner and

create new designs and technology to provide our customers with the ability to safely operate and monitor both equipment and fleet transport vehicles.





**315 W St Julian Street
Saint Peter**
507.931.1050
alumacraft.com

DIRECTIONS

Coming from Mankato continue on highway 169 until you see the McDonalds. Take a left onto St. Julien Street. Alumacraft is two blocks up on the north side of the road. Park in the street in front of the main office building or in any open parking lot spaces.

TOUR DETAILS

Saturday, October 5th
9am-1pm

Employment
Applications Available

EMPLOYMENT

Over the past 70 years, Alumacraft has proved itself to be a huge presence in the fishing world. A boat - or canoes - that needs virtually no hull maintenance. A line of boats that annually lead the market in innovation. A presence felt around the world. A boat that stays in the family for generations. A memory making machine. That's an Alumacraft boat.

After World War II, company president Harry J. Neils had a vision to produce aluminum fishing boats with the surplus of metal and skilled labor that was available. In 1946, the Alumacraft name and brand was born.

In 1970, the company was bought by Timpte Industries, Inc.

They then moved to a brand new 100,000 square foot plant in Saint Peter, MN. It's been their home ever since. In the new plant they saw continued growth. Their boats became more technically advanced, customizable, and had better features than the competition.

In 1974 Alumacraft gained a major foothold in the southern market by purchasing General Marine Corporation in Arkadelphia, Arkansas. This added a range of southern fishing boats to their inventory and

increased sales nationwide.

Durability, innovation, talented employees, and an unwavering dedication to the customer, that's the Alumacraft way. It's worked for the last 70 years. And, if you keep telling them what you want, it'll work for 70 more."

Alumacraft currently has around 250 employees, with 170 being located in their Saint Peter facility.

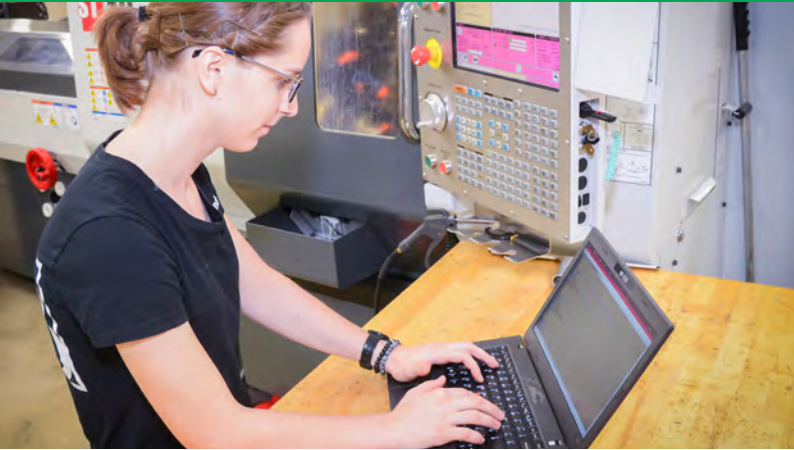
They have multiple plant openings, from Fabrication to Shipping and everything in between. There are also various administrative positions open as well.



FastTRACK

A **FREE, SHORT-TERM** program to help you
prepare for South Central College classes in:

Manufacturing



Healthcare



GET A HEAD START

We'll help you sharpen your skills for college classes and help you
arrange for financial support for classes, books and materials!

Call now to reserve a spot for our next group!

Blue Earth
(507) 526-3172

North Mankato
(507) 345-5222

LeSueur
(507) 665-4626

Next FastTRACK Manufacturing Bridge:

North Mankato:

November 13 - December 16

Monday/Wednesday/Thursday | 9 a.m. - 12 p.m.

Next FastTRACK Healthcare Bridge:

North Mankato:

October 23 - December 11

Monday/Wednesday | 12:30 p.m. - 3:30 p.m.

www.southcentral.edu/fast



A proud partner of the American Job Center Network. South Central College is an affirmative action, equal opportunity employer and educator. This document is available in alternative formats to individuals with disabilities, consumers with hearing or speech disabilities may contact us via their preferred Telecommunications Relay Service.